

Joints



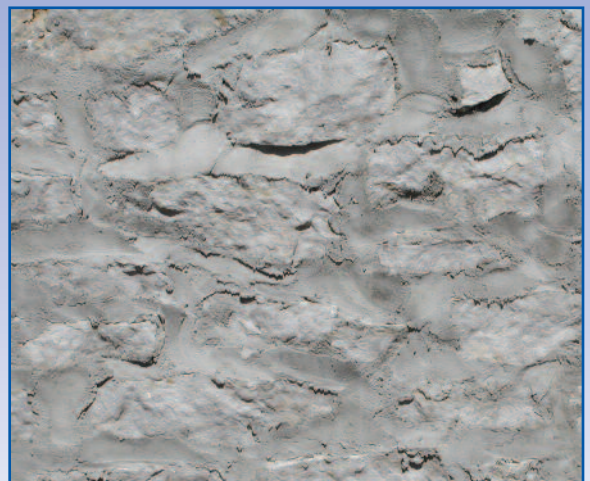
Dry Wall



Raked Joints



Flush



Smear Joint

Dry Wall:

If mortar is used so deeply recessed that is virtually unseen. The dry laid application is dry wall stone that is constructed one stone upon the other without the use of any mortar. This application is generally used for retaining walls.

Raked Joints:

A mortar joint formed by removing the mortar a given depth from the face of the masonry. The mortar joint appears to recede, and the stone is emphasized and very much exposed.

Flush:

A joint where the mortar is pressed flush with the stone face. Basically, the mortar and the stone are on the same plane.

Smear Joint:

The mortar in the joints is smeared in a thin layer onto the face of the stone.

LANG
STONE

Since 1856

707 Short St., Columbus, OH 43215

614/228-5489 • 1-800/589-LANG

Hours: M-F 7:30 - 5 / Sat. 8 - Noon

www.langstone.com

© 2008 Lang Stone Co. Version 3-08